

**BACKSTOP
BKST-E
KWN 31000**

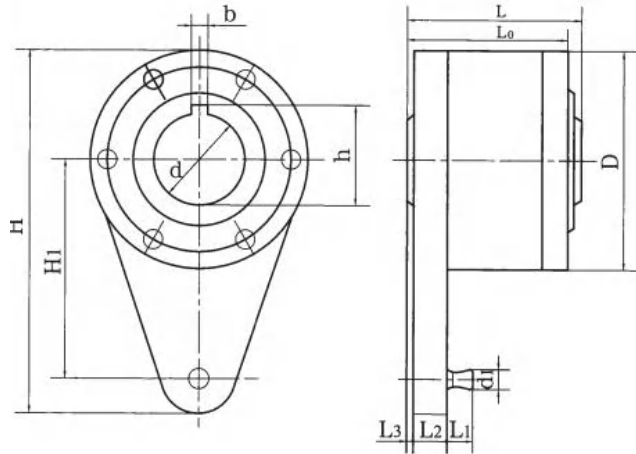


**Product | Engineering Services
Maintenance**

NF type contactless wedge non-return device technical parameters and installation dimensions

Description

NF type is the non-contact backstop, which is widely used in the design of transportation machinery and lifting machinery for mining, bulk material collection and lifting device. The internal structure of the new type wedge with optimized design is used, except for the great impact resistance and the large backstop moment. When the forward rotation speed of input shaft is higher than the minimum speed, the internal work can achieve no contact, zero wear and long service life.



unit: mm

型号 Model	额定逆 止转矩 Non-return rated torque (N · m)	最小非接 触转速 Minimum non- contact speed n _F (r/min)	最高 转速 Speed n _{max} (r/min)	孔径 范围 Pore size range d	安装轴 伸范围 Shaft extension range s	外型及安装尺寸 Installation size is									质量 quality m (kg)
						D	H	H ₁	L	L ₀	L ₁	L ₂	L ₃	d ₁	
NF10	1000	450	1500	40-50	120-142	190	278	150	162	145	25	20	5	28	28
NF16	1600	450	1500	45-60	125-148	208	305	160	167	150	25	22	5	32	31
NF25	2500	425	1500	50-70	130-152	230	330	170	172	155	25	25	5	38	38
NF40	4000	425	1500	60-80	135-162	245	358	185	183	166	28	30	5	42	49
NF63	6300	400	1500	70-90	155-178	260	378	195	196	180	30	35	5	45	62
NF80	8000	400	1500	80-100	160-182	275	410	210	200	185	35	35	5	48	73
NF100	10000	400	1500	90-110	170-218	295	440	225	238	220	35	45	5	52	98
NF125	12500	375	1500	100-130	180-248	330	492	250	262	250	40	50	8	58	154
NF160	16000	375	1000	110-140	200-258	360	532	270	273	260	40	55	8	62	175
NF200	20000	350	1000	120-150	205-258	400	570	300	275	260	50	58	8	65	214
NF250	25000	350	1000	130-160	230-268	430	646	335	285	270	50	63	8	70	256

Various keyway dimensions for apertures

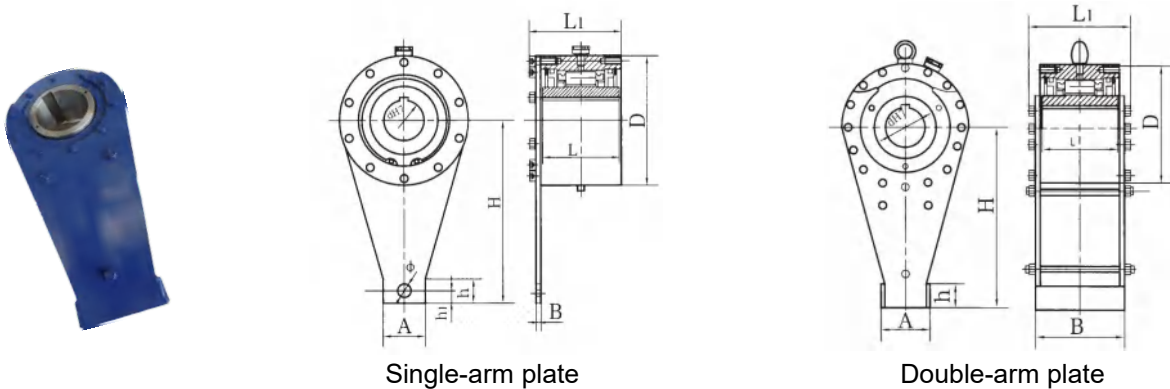
d (E7)	40	42	45	48	50	55	60	65	70	75	80
h	43.3	45.3	48.8	51.8	53.8	59.3	64.4	69.4	74.9	79.9	85.4
b (C11)	12	12	14	14	14	16	18	18	20	20	22
d (E7)	85	90	95	100	110	120	130	140	150	160	
h	90.4	95.4	100.4	106.4	116.4	127.4	137.4	148.4	158.4	169.4	
b (C11)	22	25	25	28	28	32	32	36	36	40	

According to the user's demand, other types of overrunning clutch can be made.

NYD (NJ) contact wedge non-return device technical parameters and installation dimensions

Description

Model NYD is a low speed contact backstop, which is widely used in the belt conveying machinery industry, and is suitable for the occasions where the material lifting must be backstop. It has the advantages of compact structure, reliable backstop, easy release, convenient installation and strong applicability.



NYD(NJ) Various keyway dimensions for apertures

unit: mm

型号 Model	公称转矩 Torque Tn (N·m)	孔径范围 Pore size range d	内圈最高转速 Speed n (r/min)	空转助力矩 Idling torque (N·m)	结构尺寸 Boundary Dimensions									最大质量 quality m (kg)
					A	B	D	H	h	h1	Φ	L	L1	
NYD65	1600	50-65	150	4	50	6	160	226	30	16	13.5	85	106	13.5
NYD75	2500	60-75		5	65	6	170	269	35	19	16.5	85	106	16.1
NYD85	6000	70-85		8	95	9	210	329	45	29	20.5	110	135	29.2
NYD95	8000	80-95		10	105	9	230	382	55	32	20.5	110	138	37.2
NYD110	11000	90-110		15	110	12	270	425	60	40	26	110	141	46.1
NYD130	16000	100-130	100	20	120	12	320	506	65	36	26	130	161	82.8
NYD160	25000	120-160		35	120	20	360	612	65	32	31	140	183	125
NYD200	38000	160-200		45	130	20	430	623	70	43	41	160	207	180

型号 Model	公称转矩 Torque Tn (N·m)	孔径范围 Pore size range d	内圈最高转速 Speed n (r/min)	空转助力矩 Idling torque (N·m)	结构尺寸 Boundary Dimensions							最大质量 quality m (kg)
					A	B	D	H	h	L	L1	
NYD220	50000	160-220	80	75	238	259	500	820	80	230	303	351
NYD250	90000	180-250	50	95	288	323	600	1000	100	290	367	675
NYD270	125000	200-270		100	298	323	650	1100	110	290	367	737
NYD300	180000	230-300		110	356	335	780	1300	135	290	392	1123
NYD320	270000	250-320		140	386	345	850	1500	135	320	412	1425
NYD350	320000	250-350		160	414	360	930	1600	135	360	426	1955
NYD420	520000	320-420		220	474	484	1030	1800	165	450	550	2930
NYD450	700000	350-450		250	526	494	1090	2000	165	480	574	3380

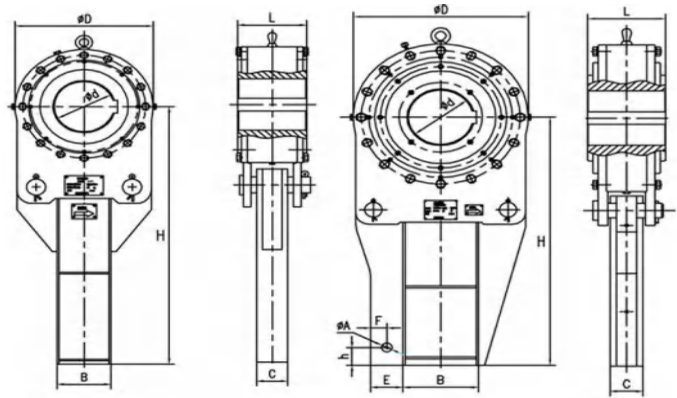
Note:

1. The hole tolerance is H7(GB/T1800,4-1999), the recommended shaft tolerance is h6, the fit tolerance is H7/h6, the keyway according to JS9 from GB/T1095-1979, grade 7-9 standard production from GB/T1184-1996.
2. Please mark the hole diameter and dimension difference on the order, otherwise, it is processed according to the standard matching and tolerance H7.
3. Please choose the preferred aperture: 50、55、60、65、70、75、80、85、90、95、100.....

NDZ contact device technical parameters and installation dimensions

Description

NDZ contact backstop is a kind of low-speed anti reverse device, with bearing support, filter interface, oil mark and labyrinth lubrication channel. It has the advantages of compact, light weight, wedge fitting and low installation accuracy. It can be directly installed on the main engine roller or the reducer. It is a kind of protection device for lifting transportation equipment. Compared with Nd type backstop, it has the advantages of high Overrunning Speed, large torque, high precision, long service life, safer and more reliable. It can be used for large angle conveyor, bucket elevator and other equipment with backstop requirements



型号Model	承载能力 loading capacity (N.m)	内环最高转速 Maximum speed of inner ring (rpm)	空转阻力矩 Idling resistance moment (N.m)	孔径范围 Bore size range (mm)	结构尺寸 structuresizes(mm)								最大重量 Max.weight (kg)	
					A	B	D	H	h	Φ	L	E		F
NDZ160(NJZ16)	16000	150	20	100-130	120		320	500			150			98
NDZ250(NJZ25)	25000	150	35	120-160	140	80	360	800			150			112
NDZ400(NJZ40)	40000	150	45	160-200	160	88	430	850			160			182
NDZ500(NJZ50)	50000	150	75	160-220	200	100	500	1000			240			354
NDZ1000(NJZ100)	100000	150	95	180-250	250	120	600	1200			290			644
NDZ1300(NJZ130)	130000	90	100	200-270	280	120	650	1300	80	40	290	120	60	755
NDZ2000(NJZ200)	200000	90	110	230-300	320	130	780	1300	80	45	290	135	60	1088
NDZ2800(NJZ280)	280000	90	140	250-320	360	140	850	1500	100	50	320	150	70	1426
NDZ3300(NJZ330)	330000	80	160	260-350	400	140	930	1600	100	55	360	160	70	1921
NDZ5300(NJZ530)	530000	80	220	320-420	450	150	1030	1800	120	60	450	180	80	2945
NDZ7100(NJZ710)	710000	80	250	350-450	500	160	1090	2000	120	70	480	210	100	3.518
NDZ10000(NJZ1000)	1000000	70	280	380-480	560	170	1200	2200	150	80	500	230	110	4442

Note:

- 1.The hole tolerance is H7, the recommended shaft tolerance is h6, the keyway according to GB/T1095-1979, grade 7-9 standard production from GB/T1184-1996. General key connection is used for width deviation, the shaft is N9 and the hub is Js9.
- 2.The axial position of the moment arm can not be rigid, so that the moment arm can move axially to prevent the additional moment caused by the misalignment of the shaft. The pin or angle iron can be used for circumferential positioning, and the circumferential iron can not be tilted, otherwise the backstop will fail.
- 3.NJZ represents the standard code of coal industry



KUDOSWORLD CORPORATION

Website: www.kwdcoupling.com

Add: Orchard Summer Palace, No.209- 2 Qingnian Street, Shenhe
District, Shenyang City, China 110016

Tel: 0086 (024) 31976438

Fax: 0086(024) 3197 6437